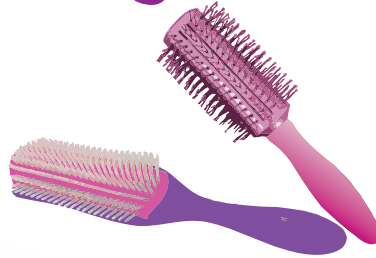


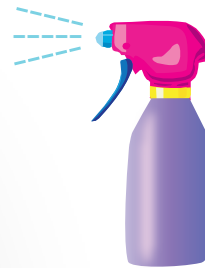
Hair Care



BRUSHING

Use hair brush with rubber bristles.

TIP: Gently work on tangles from the ends to the crown.



STYLING

Very lightly mist doll's hair with distilled lukewarm water.

i LOVE WHEN YOU BRUSH MY HAIR!



Do NOT use heat or styling products. Do NOT use shampoo.

Advanced CARE

Everyone's hair may become dry on the ends at some time. If this happens to your doll, follow the procedures below:

1. Take 2 tissues and fold them.
2. Lightly spray baby oil on the tissues. Make sure not to saturate it with oil.
3. Take the tissues and lightly brush the ends of the doll's hair.
4. Take a comb and gently brush the ends.